

**Lotus Consulting presents:**

## Air Scion – 8300/8700 GCMS

The Air Scion from Lotus Consulting provides impressive separations and detection of trace volatile organics in ambient air samples. The system features the Scion 8300 Gas Chromatograph with built-in high performance sample concentrator and the Scion 8700 SQ Mass Spectrometer. This system handles both pressurized canisters and Tedlar bags without hardware changes. And the system meets the exacting requirements for the US EPA TO-15 implementation for speciation of toxic compounds and the California Air Resources Board SOP No. MLD052 for determination of toxic organic compounds in ambient air.

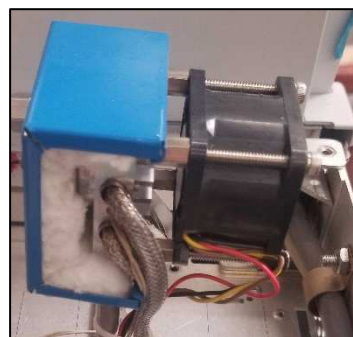
The fully automated system is designed to completely resolve nearly all volatile organics from Freons to Hexachlorobutadiene to levels typically below 0.008 ppb V/V (300 ml injection). Samples are loaded through a 16-position heated automated sampler and trapped onto a low-volume adsorbent trap, with a mass flow controller (MFC) setting the sample size. A secondary cryofocus trap reduces the sample components to a smaller volume for injection into the column.

Detection of toxic organic compounds in ambient air is undoubtedly one of the most difficult analyses in gas chromatography. Samples must be concentrated into a small volume to enhance detection. A very large number of possible organics (>300) must be “fully” resolved to avoid improperly assigning concentrations from overlapping peaks. Identification and detection is facilitated with the extremely sensitive Scion MS. The system typically involves an adsorbent trap, a cold trap, at least 3 automated valves, 16- or 31-position automated sampler, and one workstation. All of these operations utilize nearly all of the powerful and comprehensive capabilities of the Scion 8300, Scion 8700 SQ MS and Scion MS Workstation. Such a complex analyzer requires assurances that the data is valid, that the system is fully functional and easy to use, and that the ultimate performance is achievable.

**The entire system, including gas chromatograph, mass spectrometer, concentrator and valving, fits into a package with a footprint of 24 inches (61 cm) wide by 22 inches (56 cm) deep.**



← 24 inches →



Adsorbent Trap



Cryofocus Trap

# SOLUTIONS TO DIFFICULT ANALYTICAL PROBLEMS...

## Clean System Blanks

- Empty tubing or carbon adsorbents for traps
  - No thermal breakdown products
  - Maximum temperature limit of 400 °C
- All valves are heated; limited to 225 °C max
- Cryogenic cleansing of purge gas –  
vented after each cycle

## Efficient Recovery of Light-End Components

- Area reproducibility for Ethane - < 2 %
- Accurate control of trap temperature (< ±2 °C) over complete temperature range
  - Self-calibrating platinum probe (RTD)
- Stable control of trap temperature (< ±2 °C)
  - Proportional controller
  - Close contact between heater, cryogen and trap
  - Silver-soldered connection of trap to mandrill
- Efficient trapping of Ethane on empty tubing and glass beads at -172°C

## Full Recovery of “Heavy” Compounds

- All sample lines heated – no cold spots
- Smooth and inert sample lines – electroformed nickel
- Trap desorbing temperatures to 450 °C
- Effective release (>90 % of C<sub>12</sub>; >80 % of C<sub>13</sub>) from empty tubing or glass beads trap at 200 °C
- Maximum trap heating rate – 300 °C/min

## Elimination of Interfering Artifacts

- Multi-bed carbon adsorbent trap and cryofocus trap standard
- No thermal breakdown of trap adsorbents that would yield interfering hydrocarbons (i.e. Benzene with Tenax)
- No reaction with NO<sub>x</sub> that would yield interfering hydrocarbons (Ethene)
- Trap temperature limit to 450 °C

## Sharp Chromatographic Peaks

- Minimum distance from cryofocus trap to column (~15 cm)
- Cryofocus trap isolation during trap heating
- Columns attached directly to final valve
  - minimum effect of extra-column volumes at critical chromatographic point
- Trap volume:
  - Adsorbent trap – ~600 microliters
  - Empty tubing - ~50 microliters
- diCl diF Methane peakwidth<sub>½ height</sub>: < 6 sec

## Accurate Measure of Sample Volume

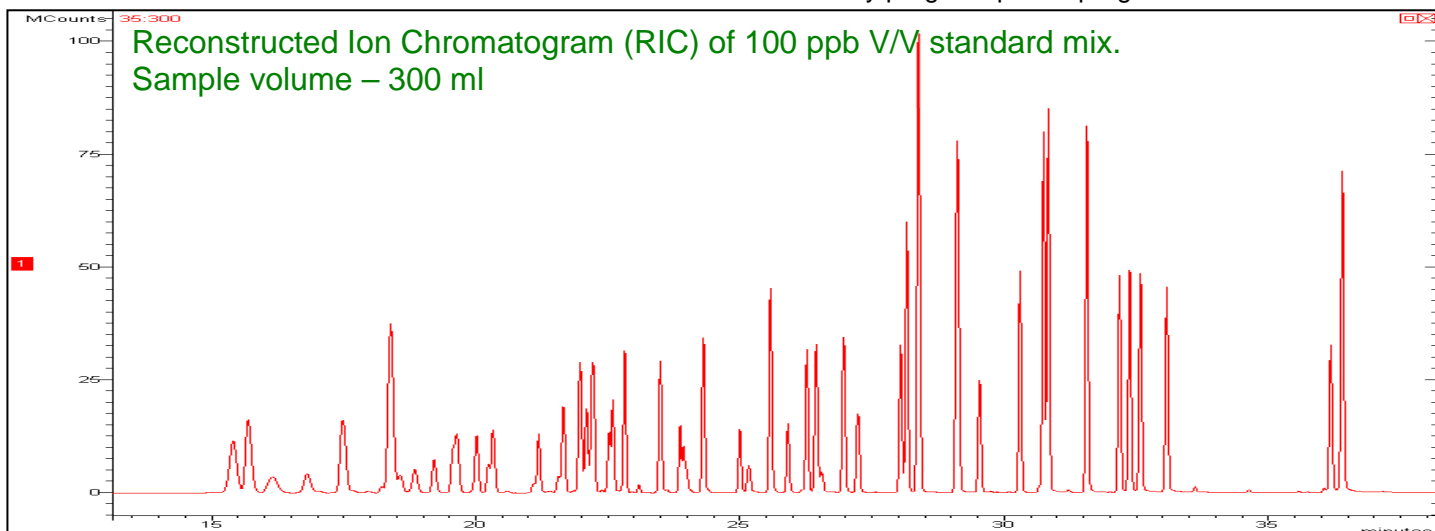
- Sample flow to vent just before trapping
  - Stabilizes MFC
  - Sweeps sample lines with new sample
- Volume-measuring flow path swept with nitrogen prior to trap heating
- Accurate volumes from 5 ml to 2400 ml
- Sample pressure can be below atmospheric and still maintain proper loading
- Sample loading independent of canister pressure

## High Concentrations of CO<sub>2</sub>?

- Mass Flow Controller (MFC) not accurate with major portions of CO<sub>2</sub>
  - MFC usually calibrated for air; cannot handle gas mixtures properly
  - 50% CO<sub>2</sub> yields **double** the sample volume!!
- Optional fixed volume sample loop to 400 ml
  - Multiple loadings to trap for larger volumes
  - Full recovery of all hydrocarbons
  - Accurate measure of sample volume - even mixtures
- CO<sub>2</sub> normally elutes prior to first toxic and does not interfere spectrally

## Water Treatment

- Multi-bed carbon adsorbents are hydrophobic and do not trap water at ambient temperatures and are effective traps for all components on TO15 list
  - Allows full recovery of both light-ends and heavies
  - Effectively handles water-saturated samples
  - Dry purge step time-programmable



# ...AND MORE SOLUTIONS

## Minimal Carry-over

- Traps continuously purged with nitrogen when sample not loading
- Sample lines swept to vent with new sample just before trapping
- Carry-over  $\ll$  0.1 %

## Retention Time Reproducibility

- True electronic **flow** control - not pressure control
- Reproducible + accurate control of column oven temperature
  - proportional control (PID)
  - platinum probe (RTD)
- Typical RT reproducibility - < 0.03 minutes

## Quantitation Reproducibility

- Column leaks detected with pressure monitoring
- Measuring flow path swept with nitrogen prior to trap heating
- Typical area reproducibility - < 3 %

## Proper Introduction of Surrogate/ Internal Standard

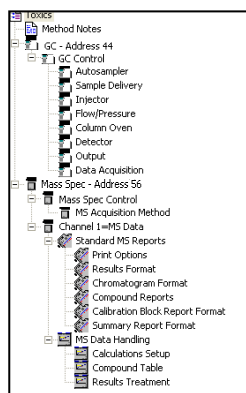
- Fixed volume sample loop
- Loop comes to atmosphere before injection
- Loaded onto trap as trap is purged with nitrogen

## Monitoring of Operations

- True electronic **flow** control for columns
  - not pressure control
  - Generated backpressure becomes a diagnostic
  - Flow remains constant throughout run without computations/fudging
- Both analog gauges and digital displays for column pressure
- Flows/pressures documented in results report
- User-specified temperature limits for all thermal zones
- Visual indication of sample loading
- Complete system status with developing chromatograms on one screen

## Simplified Method Execution

- Single run method contains **all** operating parameters for both GC and MS, including cold traps ("Injector"), valve actuations ("Sample Delivery"), compound table, computation entries and report formatting. Simply activating this single method sets up the complete system, to minimize operator errors.



## Data Processing

- User can easily view both the developing chromatogram and MS spectra in real time
- Workstation can perform library searches on peaks in developing chromatogram for immediate confirmation of peak ID
- Single stored data file contains raw chromatographic data, final report, complete run method (including GC, MS, trap parameters), stream position, run log and error messages
- Data collection, report generation, and system control operate in Windows 10
- View/edit calibration curves
- Batching printing of reports from Windows Explorer
- Multi-level security with passwords
- Peak names to 40 characters

## Data Integrity

- No overwriting of data files
- Operator cannot change Sample ID after collection
- Operator cannot change Date/Time of injection after data collection
- Cannot alter log files after collection
- Cannot change sample notes after collection
- All calibration data is archived with every raw data file
- Message log contains complete listing of system operations
- Instrument run log documents operating conditions and saved with every data file
- File names can be labeled with sample ID, injection date/time, injection number, method used and module source as variables
- File names can be up to 255 characters long

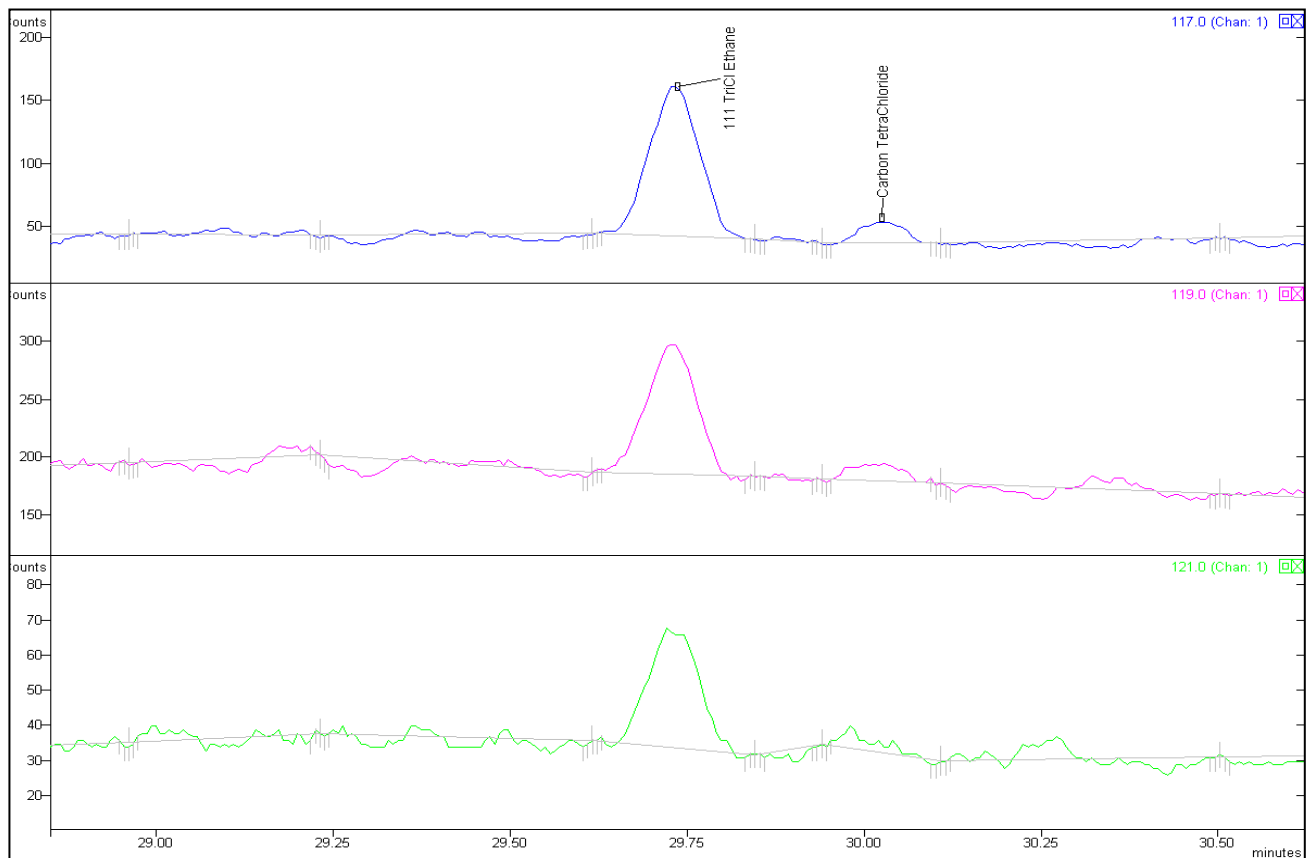
## Options

- Fixed volume sample loop for proper handling of high CO<sub>2</sub> samples
- Addition of another detector, such as Flame Ionization Detector (for quantitation of hydrocarbons, especially the very light ones, including ethane, ethene, ethyne, propane, propene and propyne) and Pulsed Flame Photometric Detector (for sulfur compounds)
- Pressure station to bring canisters above atmospheric pressure to proper loadings
- Automatic insertion into SampleList of pressure station readings before and after pressurization for dilution corrections
- 10-position Canister cleaner with single high capacity, non-oil pump

# Performance

## EXTREME SENSITIVITY

Sensitivity is demonstrated with this chromatogram of Carbon Tetrachloride (right). This NIST component concentration is 930 ppQ V/V (0.0009 ppb)! Loaded sample volume is equivalent to just 150  $\mu$ l. Displayed is the quantitation ion 117, 119 and 121 m/z only for the region at the elution of Carbon Tetrachloride and 111 TriChloroEthane.

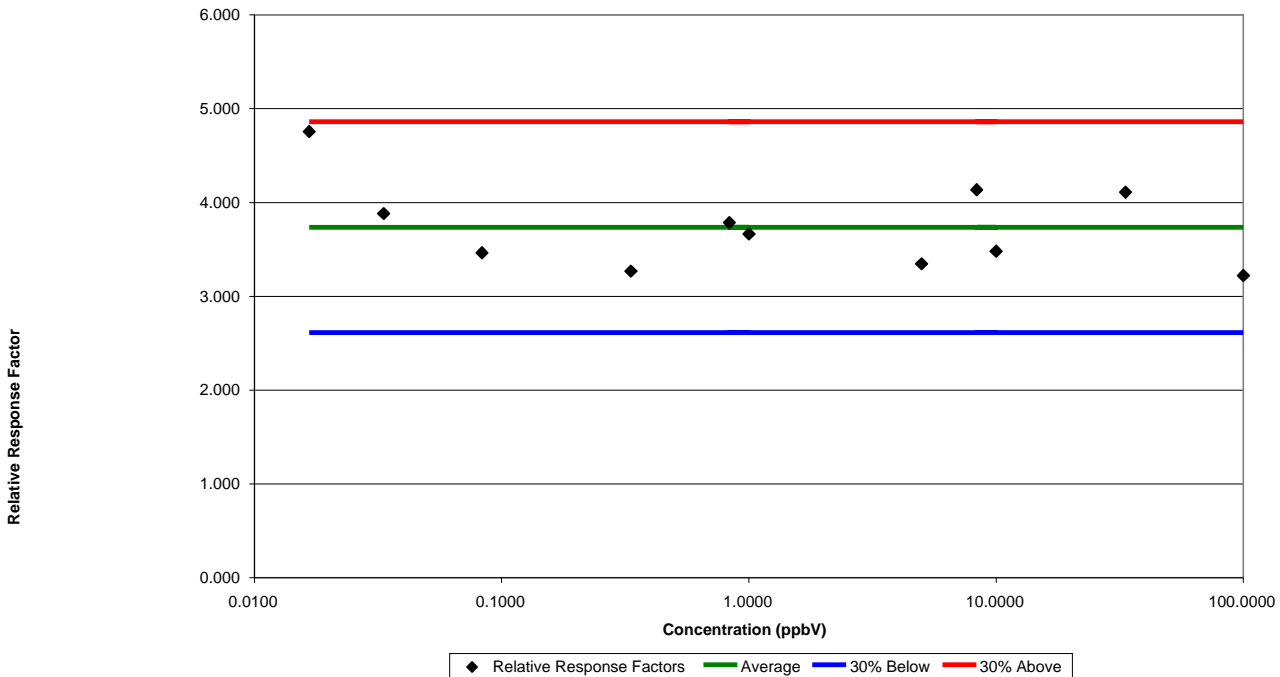


The Scion 8700 MS takes the next step in achieving enhanced performance by transferring more ions to the detector through a physical change in the electrode design and a new patented ejecting waveform. Its 180° collision cell is mounted so that neutrals and stray electrical charges end up going straight and miss the bend, while the ions of interest make the curve, resulting in more desirable signal and less noise. The linear range is also extended with these improvements.

# ...and More Performance

**GREAT LINEAR RANGE  
< 6,600**

**Bromodichloromethane**  
from 0.016 ppbV/V to 100 ppbV/V



A nice advantage of Mass Flow Controllers for sample loading is that we can use them to generate multiple level calibrations, all based on a single standard or just a few standards. As the sample flow to the cold trap remains constant, the sampling time is varied to yield the different concentrations.

The graph above illustrates the linearity from 0.016 ppb to 100 ppb by setting the MFC to 50 ml/min and varying the sampling time from 0.1 minutes to 6 minutes for three standards of 100 ppb V, 10 ppbV and 1 ppbV.

# ...and Even More Performance

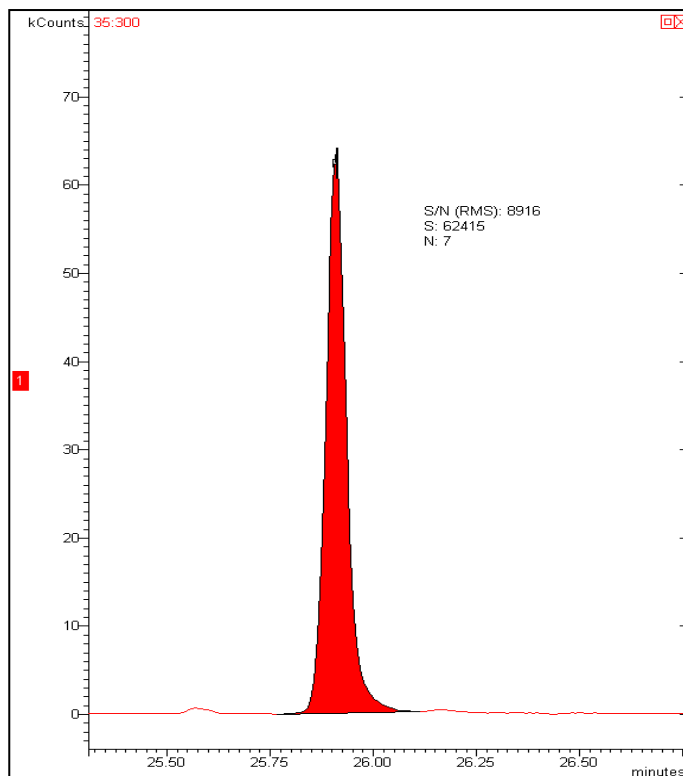
## TYPICAL DETECTION LIMITS for Selected Compounds

(300 ml sample, selected ions monitoring)

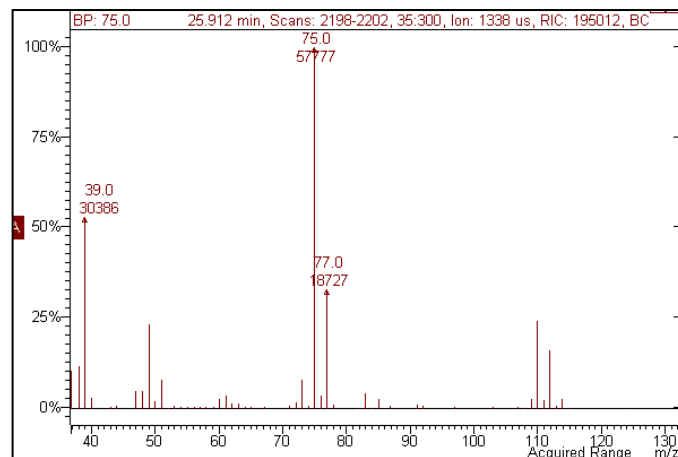
Compound	Quant Ion	Detection Limit <sup>1</sup>	Standard Concentration
diCl diF Methane	85	0.008 ppb V/V	0.028 ppb V/V
Vinyl Cl (Cl Ethene)	62	0.012 ppb V/V	0.030 ppb V/V
CCl3F	101	0.008 ppb V/V	0.030 ppb V/V
13Butadiene	54	0.006 ppb V/V	0.024 ppb V/V
Bromomethane	94	0.006 ppb V/V	0.031 ppb V/V
diCl Methane	49	0.008 ppb V/V	0.064 ppb V/V
12diCl Ethane	62	0.007 ppb V/V	0.024 ppb V/V
Chloroform	83	0.006 ppb V/V	0.025 ppb V/V
111triCl Ethane	97	0.006 ppb V/V	0.024 ppb V/V
Benzene	78	0.006 ppb V/V	0.026 ppb V/V
12diCl Propane	76	0.004 ppb V/V	0.014 ppb V/V
c13diCl Propene	75	0.009 ppb V/V	0.028 ppb V/V
Toluene	91	0.006 ppb V/V	0.032 ppb V/V
t13diCl Propene	75	0.004 ppb V/V	0.030 ppb V/V
TetraCl Ethene	166	0.005 ppb V/V	0.031 ppb V/V
ClBenzene	112	0.010 ppb V/V	0.031 ppb V/V
EtBenzene	106	0.009 ppb V/V	0.035 ppb V/V
m/pXylene	106	0.013 ppb V/V	0.069 ppb V/V
Styrene	104	0.008 ppb V/V	0.022 ppb V/V
oXylene	106	0.008 ppb V/V	0.040 ppb V/V
13diCl Benzene	146	0.006 ppb V/V	0.029 ppb V/V
14diCl Benzene	146	0.006 ppb V/V	0.029 ppb V/V
12diCl Benzene	146	0.007 ppb V/V	0.031 ppb V/V
HexaChloro Butadiene	225	0.009 ppb V/V	0.041 ppb V/V

<sup>1</sup> Detection Limit is 3X Std Dev at or near this level.  
Standard employed to generate detection limits;  
Sample flow rate – 50 ml/min  
Sampling time – 0.05 min  
Sample Volume Injected – 5 milliliter

## RADICAL SIGNAL-TO-NOISE

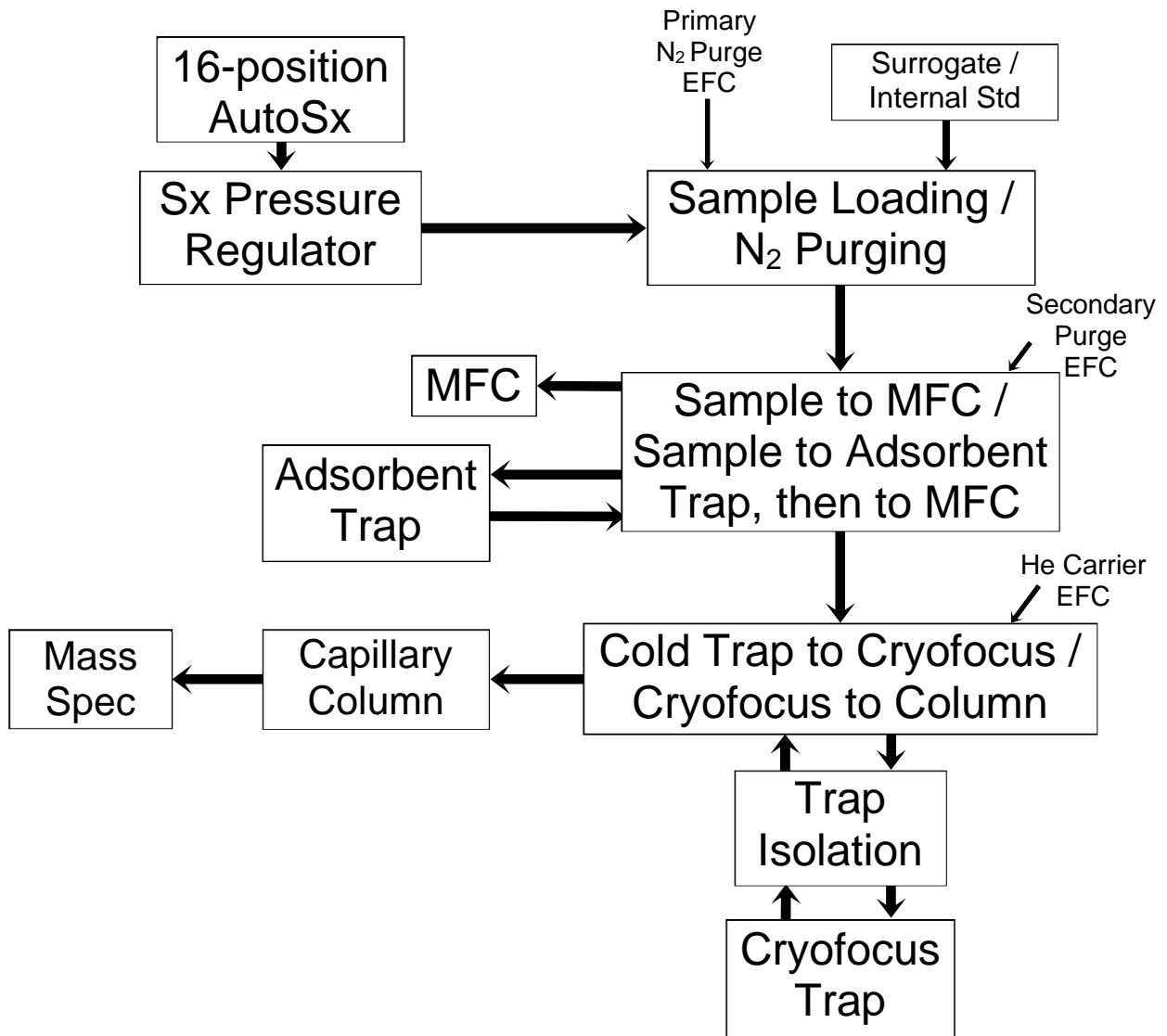


Just 300 ml sample loading of 0.030 ppb V/V trans-1,3 Dichloropropene yields a superb signal-to-noise ratio and still see full scan. Effective trapping and remarkable performance of the Scion GCMS team together to provide this achievement.



Spectrum of 0.030 ppbV/V trans-1,3 Dichloropropene

# System Diagram



# System Specifications

## Concentrator Traps

- Temperature range: -196 °C to 450 °C
- Maximum heating rate: >300 °C/minute
- Maximum cooling rate: typically >400 °C/minute
- Temperature stability: < 2 °C after 1 minute stabilization
- Temperature overshoot: max. <10 °C, typically <5 °C
- Trap Cryogen usage: < 4 liters per sample
- Multi-layer hydrophobic adsorbent trap – no Tenax
- Trap internal volume: ~50 microliters – cryofocus  
~600 microliters – adsorbent trap
- All trap settings controlled/monitored through GC with platinum probe (RTD) and proportional controller (PID)
- Programmable in 24 temperature steps with holds

## Heated Automated Sampler

- Standard: 16-position; optional 32-position
- Universal electric actuation, self-aligning
- Independently controlled valve oven
- Maximum temperature limit: 225 °C
- Sample position selected through workstation's sample list
- Position documented in final report and archived with data
- Sample lines heated through control of system

## Valving

- Fully automated, under time-programmable control of GC
- Valves mounted in heated enclosure
- Universal electric actuation, easy realignment
- Valco Series CWE; maximum temperature: 225 °C
- Valves can be turned on/off 21 separate event times  
within single method
- Automatic addition of surrogate/internal standard
- 8 external events; optional 16 external events

## Sampling

- Sample loading volume user-selectable through workstation from 5 ml to 1600 ml
- Samples in canisters or Tedlar bags can be handled without hardware changes and without corrections
- Loaded sample volume independent of canister pressure
- Optional fixed loop sampling for high CO<sub>2</sub> samples

## System Performance

- Detection limit: < 0.004 ppb V/V to < 0.021 ppb V/V (compound dependent) with 300 ml sample volume under full scan
- Linear range: <0.010 to >100 ppbV
- Area reproducibility typically < 2 %
- Carry-over « 0.1 %
- Typical RT reproducibility - < 0.03 minutes

## Pneumatics

- Column flow employs true Electronic Flow Controller (EFC), not pressure control with computed flow
- Temperature-sensitive flow elements corrected for changes in ambient
- Flows automatically adjusted for atmospheric pressure or vacuum

## Column Oven

- Column oven size: 0.7 liters; allows full sized capillary to fit
- Temperature range: -100 °C to 450 °C with LN<sub>2</sub> cryogen
- Temperature program rate: 0.1 °C/min to 180 °C/min
- Oven cool-down: 400 °C to 50 °C in 4.5 minutes without cryogen
- Programmable in 24 temperature steps with holds
- Coolant timeout to preserve cryogen when system idle
- Negative temperature programming to save coolant during sample loading

## Mass Spectrometer

- Quadrupole Mass Spec Design with pre- and post-filter
- Mass range: 1 to 1200 Da
- Scan rate: up to 20,000 Da/sec
- Dual filaments, with current up to 200 µA
- Minimum dwell time: 1 ms
- Transfer line temperature up to 350 °C
- Source temperature: 100 °C to 350 °C
- Mass axis stability: <±0.1 Da over 48 hours
- EI full scan, 1 pg OFN, from m/z 50 to 300 for m/z 272, S/N ≥ 600:1
- Electron multiplier with on-the-fly multiplier gain optimization for Extended Dynamic Range(EDR™)
- 400 L/sec Turbomolecular pump, air-cooled

## General

- All temperature displays to 0.1 °C increments
- All temperature probes are Platinum Resistive Devices
- 10" Color touch screen GC display/keyboard
- Ethernet communications between GC and Workstation
- USB communications between MS and Workstation
- Instrument width: 24 inches, including concentrator
- Line voltage for GC: 120 V, 15 amps; for MS: 120V, 15 amps

---

## Lotus Consulting

310/569-0128 Fax 714/898-7461

Email: [randy@lotusinstruments.com](mailto:randy@lotusinstruments.com)



5781 Campo Walk  
Long Beach, California 90803