

# **Labeling .RUN Data Files in Scion MS Workstation**

**by Randall Bramston-Cook  
Lotus Consulting  
5781 Campo Walk  
Long Beach, California 90803  
310/569-0128  
Email – [randy@lotusinstruments.com](mailto:randy@lotusinstruments.com)**

**April 30, 2022**

**Copyright 2022 Lotus Flower, Inc.**

Recovery of results from Scion MS Workstation can be an arduous task if data files are not organized for quick and easy retrieval. Often lack of attention on where data files are stored leads to difficulty in later locating the file for later operations.

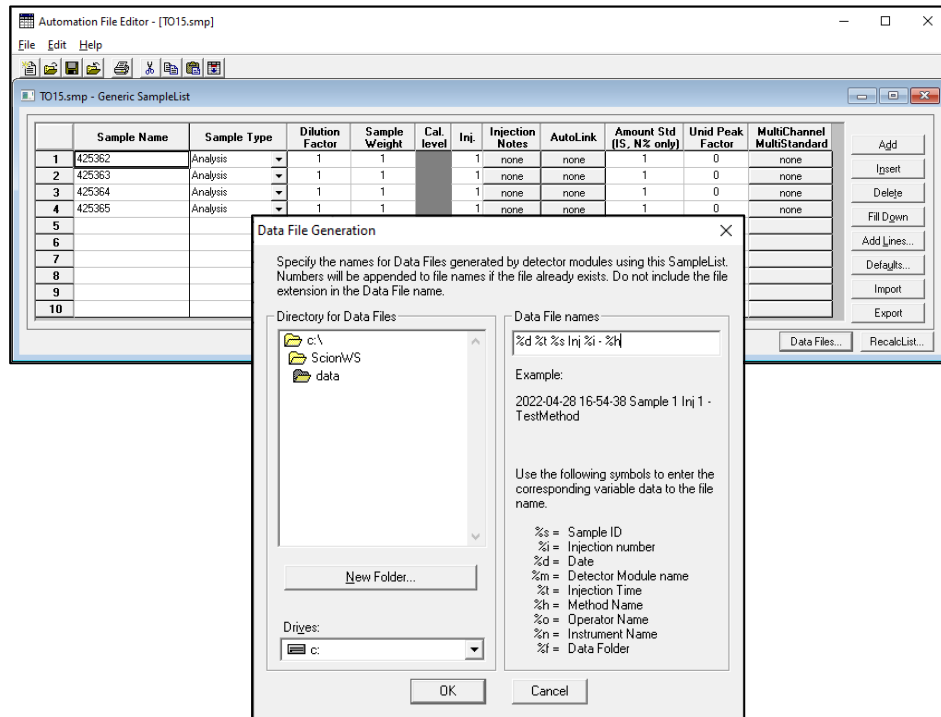
Scion MS Workstation offers special tools for the user to generating data file names that are:

- unique
- automatic
- easy
- capable of being sorted by creation date
- archived by project folder
- searchable by key words

The following discussions offer suggestions in enabling an approach that meets these requirements.

## Data File Labeling from SampleList

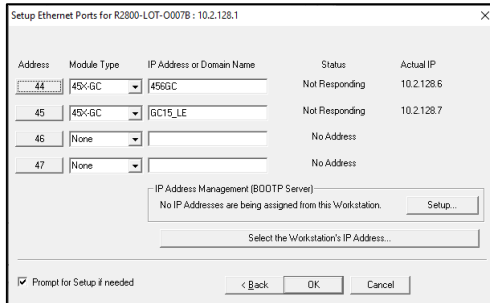
Data File labeling is set by user using a combination of symbols and alphanumeric characters. The choice given by the following example results in a label “2021-06-18 17-56-38 propane cal inj 1 - gc16 master trap -90 06-08-2021.run”.



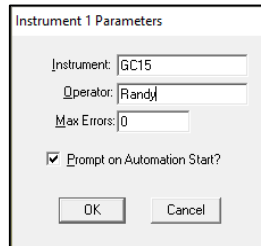
## Tokens (aka Symbols) for Automatic Data File Labels

To facilitate data file labeling and to ensure file names are unique, a combination of tokens can be used to automatically assign a label.

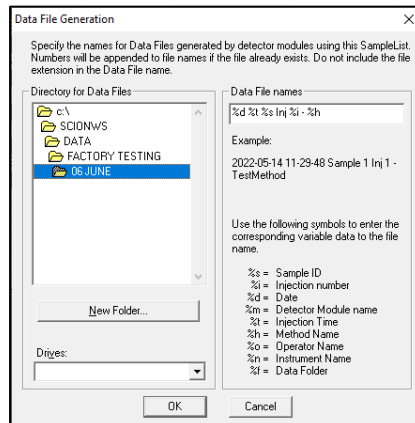
- %s – Sample Name is pulled from active SampleList. Maximum number of characters is 19.
- %i – Injection Number. Addition of “Inj %” to proceed the token to clarify entry
- %d – Date of injection based on format in System Date. Number of characters is 10.
- %m – Detector Module name. Example: 45x-gc.44 is pulled from System Control → Setup Ethernet → Module Type.Address.



- %t – Time of injection based on format in System Time. Number of characters is 5.
- %h – Method name used at injection.
- %o – Operator name is pulled from prompt when a SampleList is initiated.

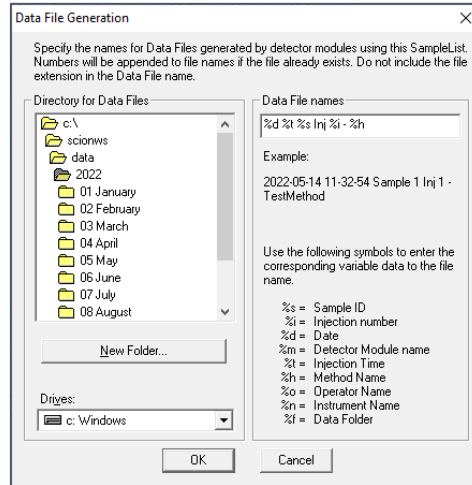


- %n – Instrument name is pulled from prompt when a SampleList is initiated.
- %f – Data Folder is pulled from entry in AutomationFile → SampleList → Data Files Directory → path chosen.



## Selecting Directory for Data Files

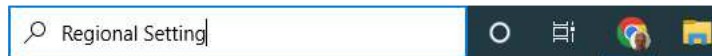
One suggestion for selecting a folder for data files is to use a format of “yyyy → XX Month” folder location for storing .RUN files can be specified with Data File button in Scion MS Workstation SampleList. For example: “2022/01 January”. This format keeps the organization of months in chronological order



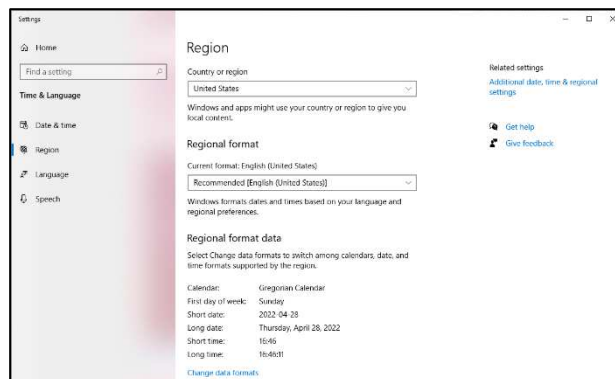
## Setting up System Date/Time Format to yyyy-mm-dd hh:mm.

To set date and time to allow easy sorting in Windows Explorer, their formats can be changed as follows:

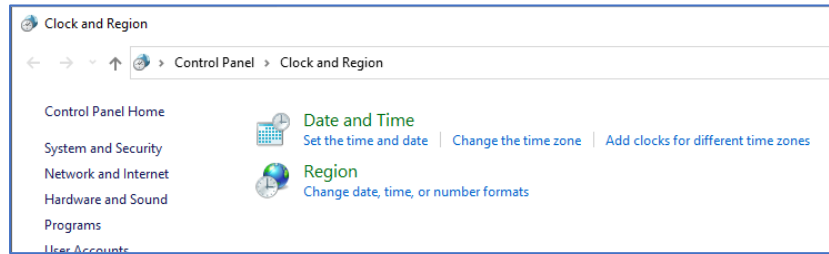
1. From Search prompt, go to “Regional Settings”



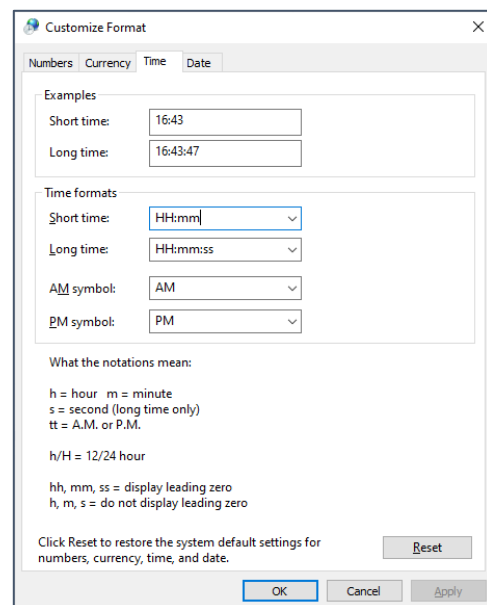
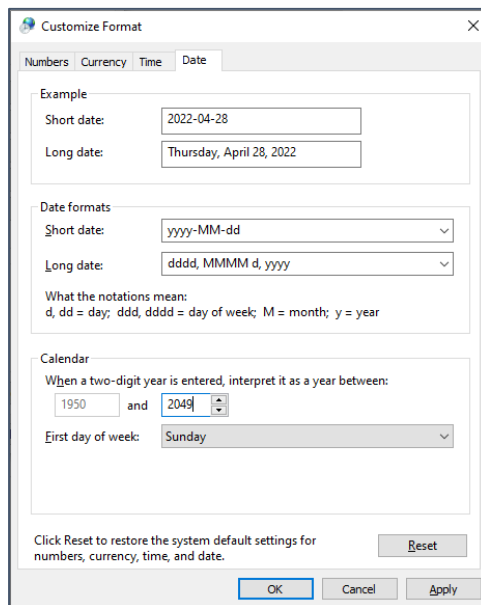
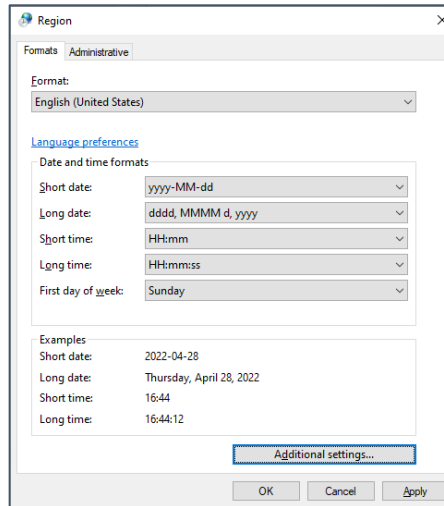
2. Select “Additional date, time & regional settings”



### 3. Select “Region”

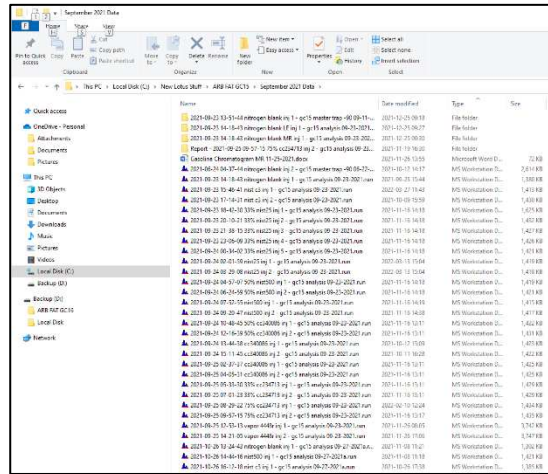


### 4. Select “Additional settings” to allow custom formats for date and time.



### 5. Set Short Date to “yyy-MM-dd” and Short Time to “HH:mm” to generate setting as “3033-04-30 16:44” for example. Settings time to “24 hour” with HH assures that 4:00 PM is sorted properly as 16:00. As a result, .RUN files can now be sorted in chronological order.

## 6. RUN files can now be sorted in chronological order.



Note: changes made will not only alter the formats in the Taskbar, but also on apps that query the time and date from Windows, such as Office apps. This means that change the time and date formats in the apps themselves need to be changed the same format showing in the Taskbar is not desired.

## Illegal File Characters

These common illegal characters or symbols cannot be used in filenames or folders, as they are reserved for program code entries in Windows and other applications. ([www.mtu.edu/umc/services/websites/writing/characters-avoid/](http://www.mtu.edu/umc/services/websites/writing/characters-avoid/)).

#	<	!
%	>	'
&	*	"
{	?	:
}	/	@
=	\$	
\		

A legal character of " " (space) is allowed in file labels with Windows 10.

## Duplicate File Names

.RUN file names can be not duplicated. MS Workstation checks for duplicate .RUN file names and if found, the label is appended with a number "xxx" this is incremented on subsequent duplications. Example: c:\scionws\data\test\test001.run

## Long File Names

Windows 10 limits file names to 255 characters. This restriction includes three characters that represent the drive, characters in the folder names, the backslash character between folders, and characters in the file name. When specific files that are in folders that have long folder and file names are opened, one of the following error messages will appear:

- Filename is not valid.
- The file could not be accessed.
- The path you entered, is too long. Enter a shorter path.
- File Name could not be found. Check the spelling of the filename, and verify that the file location is correct.
- [Stackoverflow.com/questions/26197288/why-255-is-the-limit#comment41082528\\_26197288](https://stackoverflow.com/questions/26197288/why-255-is-the-limit#comment41082528_26197288).

([docs.microsoft.com/en-us/office/troubleshoot/office-suite-issues/fails-opening-long-folder-name-files](https://docs.microsoft.com/en-us/office/troubleshoot/office-suite-issues/fails-opening-long-folder-name-files))

In Windows 10, long file name support can be enabled which allows file names up to 32,767 characters. To enable this, the following can be performed:

1. Start the registry editor (regedit.exe)
2. Navigate to  
HKEY\_LOCAL\_MACHINE\SYSTEM\CurrentControlSet\Control\FileSystem
3. Double click LongPathsEnabled
4. Set to 1 and click OK
5. Reboot

([www.itprotoday.com/windows-10/enable-long-file-name-support-windows-10](https://www.itprotoday.com/windows-10/enable-long-file-name-support-windows-10))

# Documentation of Sample Labeling

Scion MS Workstation automatically creates a MSGLOG file listing operations that occurred for the sample sequence, including .RUN data file labels with date and time of reports. MSGLOGs are found in c:/ScionWS/msglog.

```
Log Viewer - [MSGLOG1_2022-04-21_08_19_27.MLG]
File Edit View Help
Apr 21 10:30:41 DDE conversation established with Scion MS Workstation DDE Interface
Apr 21 10:30:41 Stream number 5 recovered from parameters
Apr 21 10:30:42 Current stream number 5 of 8
Apr 21 10:30:42 Stream Select Valve will not be repositioned
Apr 21 10:30:42 Scion MS Workstation DDE Interface terminated DDE conversation
Apr 21 10:30:45 Method HIP46D 07-08-2021.mth Activated
Apr 21 10:31:26 Automation Suspended
Apr 21 10:31:26 Scion MS Workstation DDE Interface suspended automation
Apr 21 10:31:26 Scion MS Workstation DDE Interface terminated DDE conversation
Apr 21 10:57:03 Data File 2022-04-21 10-31-02 46d0174 soak inj 1 - hip46d 07-08-2021.run created for '46D0174 Soak', I
Apr 21 10:57:03 45X-GC.44 Ch Front Data Handling: All peaks rejected
Apr 21 10:57:05 Ran AutoLink Command: "C:\Program Files [x86]\Lotus Consulting Inc\Kittyhawk HIP Cycle Gas Analysis\ms
Apr 21 10:57:05 DDE conversation established with Scion MS Workstation DDE Interface
Apr 21 10:57:05 Datafile information successfully processed
Apr 21 10:57:05 Scion MS Workstation DDE Interface terminated DDE conversation
Apr 21 18:55:35 DDE conversation established with Scion MS Workstation DDE Interface
Apr 21 18:55:35 Activating Method C:\ScionWS\methods\HIP46D 07-08-2021.mth
Apr 21 18:55:37 Automation Resumed
Apr 21 18:55:37 Scion MS Workstation DDE Interface resumed automation
Apr 21 18:55:37 Ran AutoLink Command: "C:\Program Files [x86]\Lotus Consulting Inc\Kittyhawk HIP Cycle Gas Analysis\ms
Apr 21 18:55:37 DDE conversation established with Scion MS Workstation DDE Interface
Apr 21 18:55:37 Stream number 5 recovered from parameters
Apr 21 18:55:38 Current stream number 5 of 8
Apr 21 18:55:38 Stream Select Valve will not be repositioned
Apr 21 18:55:38 Scion MS Workstation DDE Interface terminated DDE conversation
Apr 21 18:55:41 Method HIP46D 07-08-2021.mth Activated
Apr 21 18:56:22 Automation Suspended
Apr 21 18:56:22 Scion MS Workstation DDE Interface
Apr 21 18:56:22 Scion MS Workstation DDE Interface
Apr 21 19:22:00 Data File 2022-04-21 18-55-57 46d0174 vent 1 - hip46d 07-08-2021.run created for '46D0174 Vent', I
Apr 21 19:22:02 Ran AutoLink Command: "C:\Program
Apr 21 19:22:02 DDE conversation established with S
Apr 21 19:22:02 Datafile information successfully pro
Apr 21 19:22:02 Scion MS Workstation DDE Interface
Apr 22 06:50:08 DDE conversation established with S
Apr 22 06:50:08 Activating Method C:\ScionWS\methods\Calibration 06-07-2021.mth
Apr 22 06:50:10 Automation Resumed
Apr 22 06:50:10 Scion MS Workstation DDE Interface resumed automation
Apr 22 06:50:10 Ran AutoLink Command: "C:\Program Files [x86]\Lotus Consulting Inc\Kittyhawk HIP Cycle Gas Analysis\ms
Apr 22 06:50:10 DDE conversation established with Scion MS Workstation DDE Interface
Apr 22 06:50:10 Stream number 1 recovered from parameters
Apr 22 06:50:11 Current stream number 5 of 8
```

