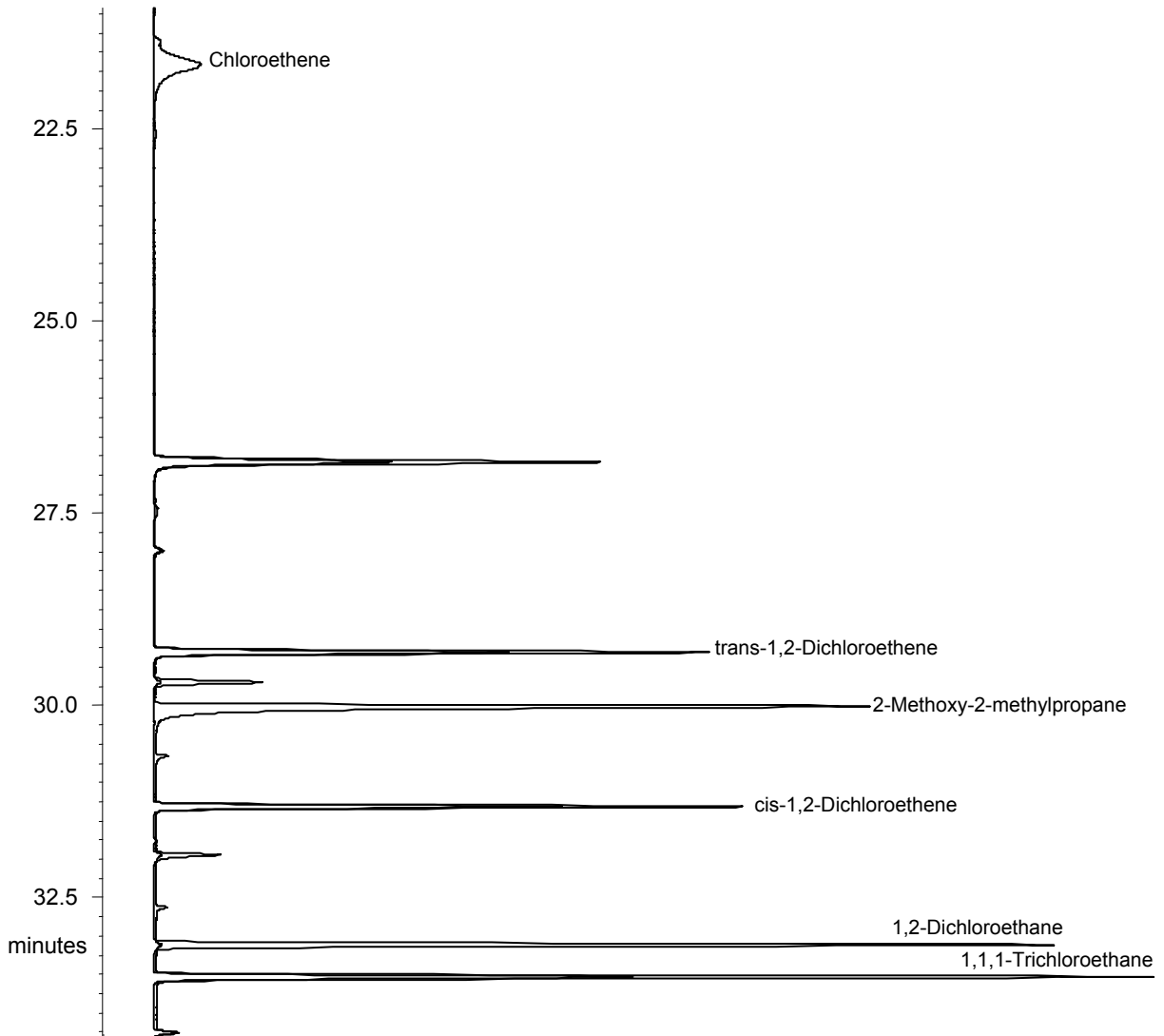


# Peak Assignments for California Human Health Screening Levels for Vapor Intrusion Measurements with Capillary Column

Technique: GC Capillary with MS Detection, configured for High Level Vapor Intrusion samples

Column: Restek RTX-1, 60 m x 0.25 mm ID, df = 1 $\mu$ m  
Temperature: 50 °C (2 min), -100 °C/min to -20 °C (12.3 min hold), 5 °C/min to 70 °C, 10 °C/min to 220 °C  
Carrier gas: Helium, 1 ml/min  
Injection: Cryotrapping following EPA TO15 protocol  
Detector: Varian 240 Ion Trap GCMS  
Sample: Restek TO15 65-Component Mix, 1 ppmV + Scott-Marrin CHHSL standard  
Sample Conc: 1 ppm V + various higher levels for some analytes  
Sample Vol: 5 ml, Injection Split 1:100



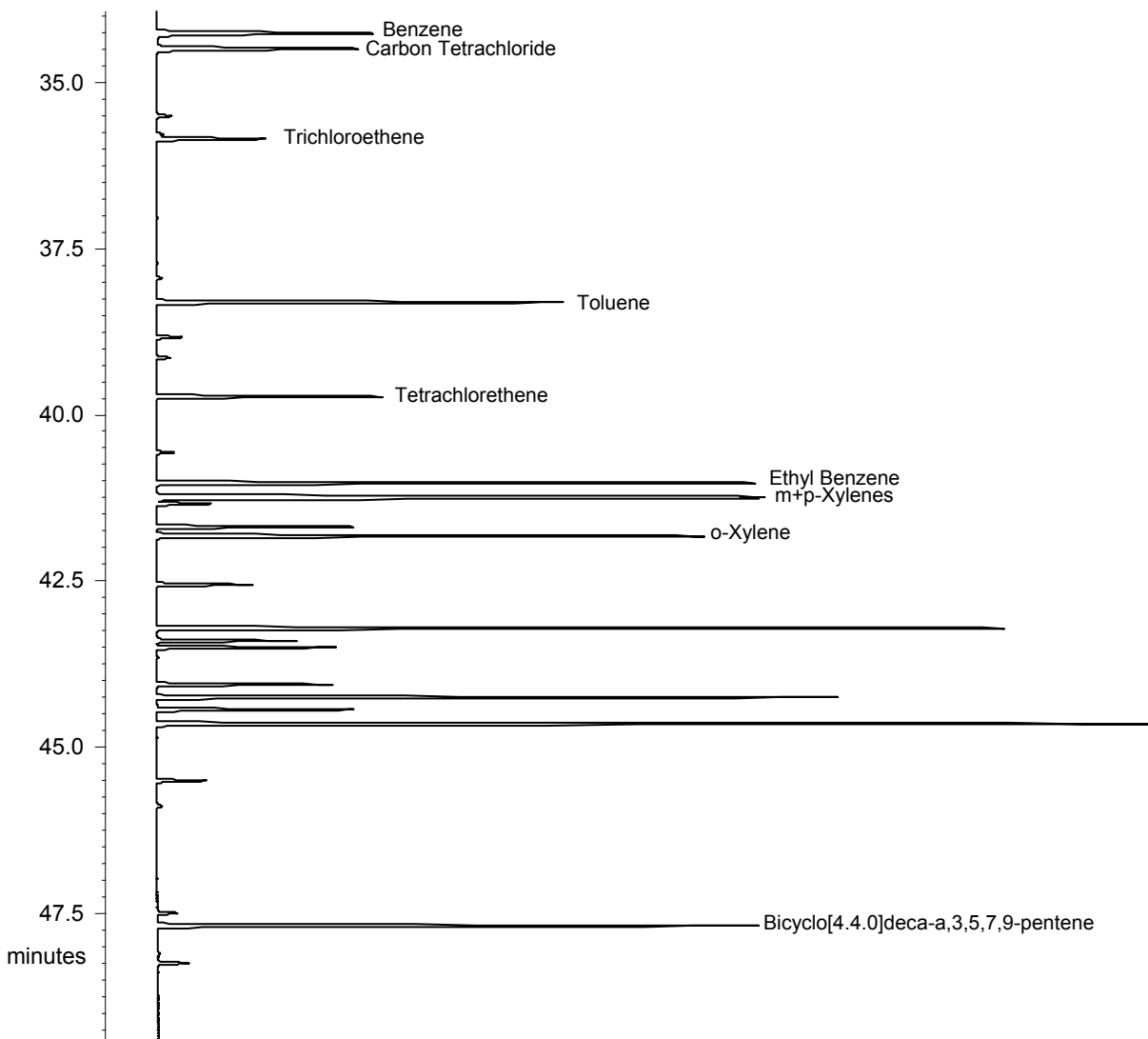
---

**Lotus Consulting**

310/569-0128 Fax 714/898-7461  
email ebramstoncook@msn.com



5781 Campo Walk  
Long Beach, California 90803



Interconversion of IUPAC and Common Names	
IUPAC Label	Common Name
Chloroethene	Vinyl Chloride
2-Methoxy-2-methylpropane	Methyl-tert-butyl ether
Trichloroethene	Trichloroethylene
Tetrachloroethene	Tetrachloroethylene
Bicyclo[4.4.0]deca-a,3,5,7,9-pentene	Naphthalene

Notes:

1. On-column injection performed at 11.00 minutes. Prior interval involves trapping processes.
2. All compound labels are per IUPAC protocol.
3. Peaks are displayed using their Quan Ions only.
4. Using 91+106 Quan ions for xylenes aids in extending the dynamic range for these analytes.