

Peak Assignments for Illinois Tiered Approach to Corrective Action Objectives for Vapor Intrusion Measurements with Capillary Column

Technique: GC Capillary with MS Detection, configured for High Level Vapor Intrusion samples

Column: Restek RTX-1, 60 m x 0.25 mm ID, df = 1 μ m

Temperature: 50 °C (2 min), -100 °C/min to -20 °C (12.3 min hold), 5 °C/min to 70 °C, 10 °C/min to 220 °C

Carrier gas: Helium, 1 ml/min

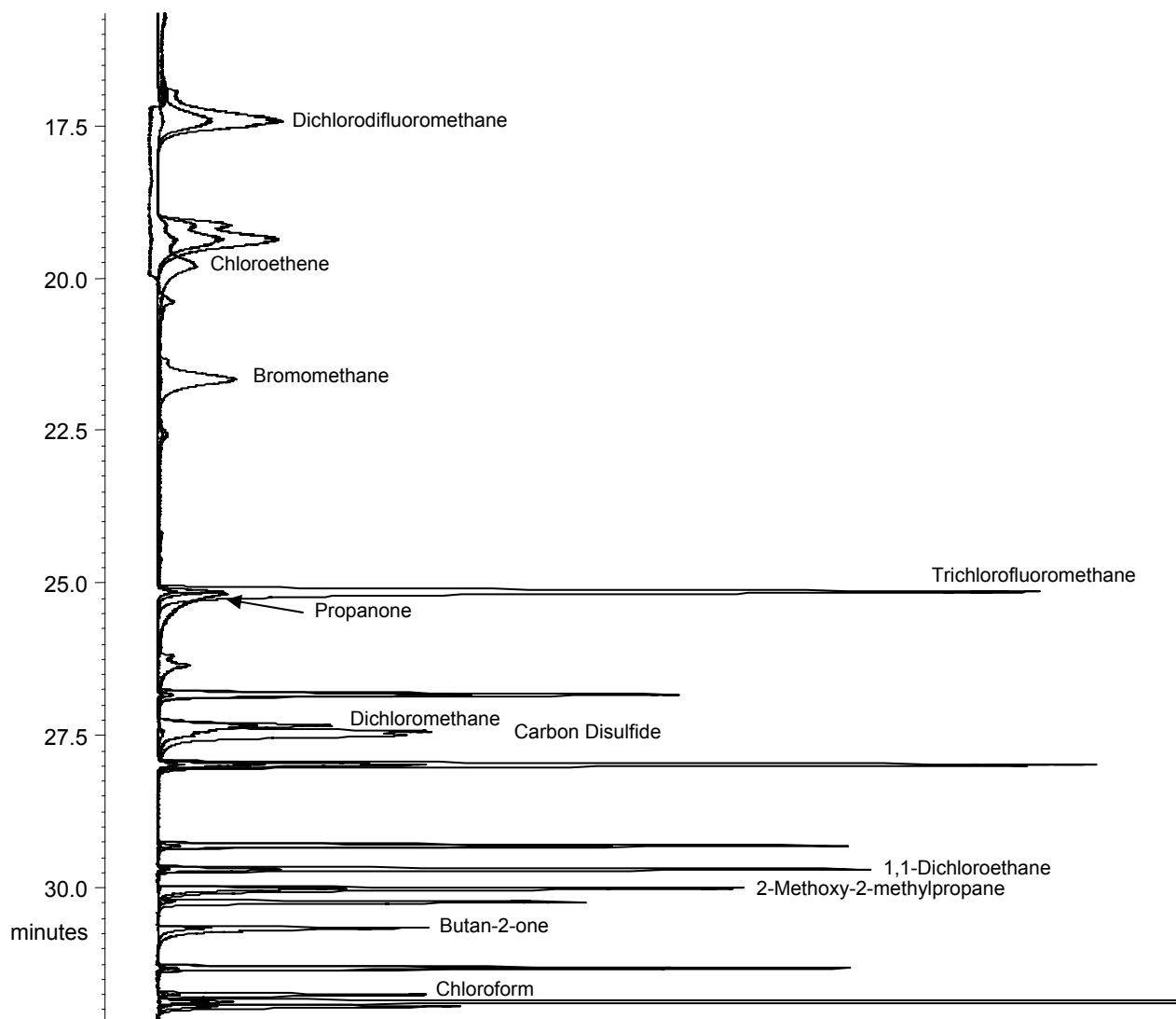
Injection: Cryotrapping following EPA TO15 protocol

Detector: Varian 240 Ion Trap GCMS

Sample: Restek TO15 65-Component Mix, 1 ppmV

Sample Conc: 1 ppm V

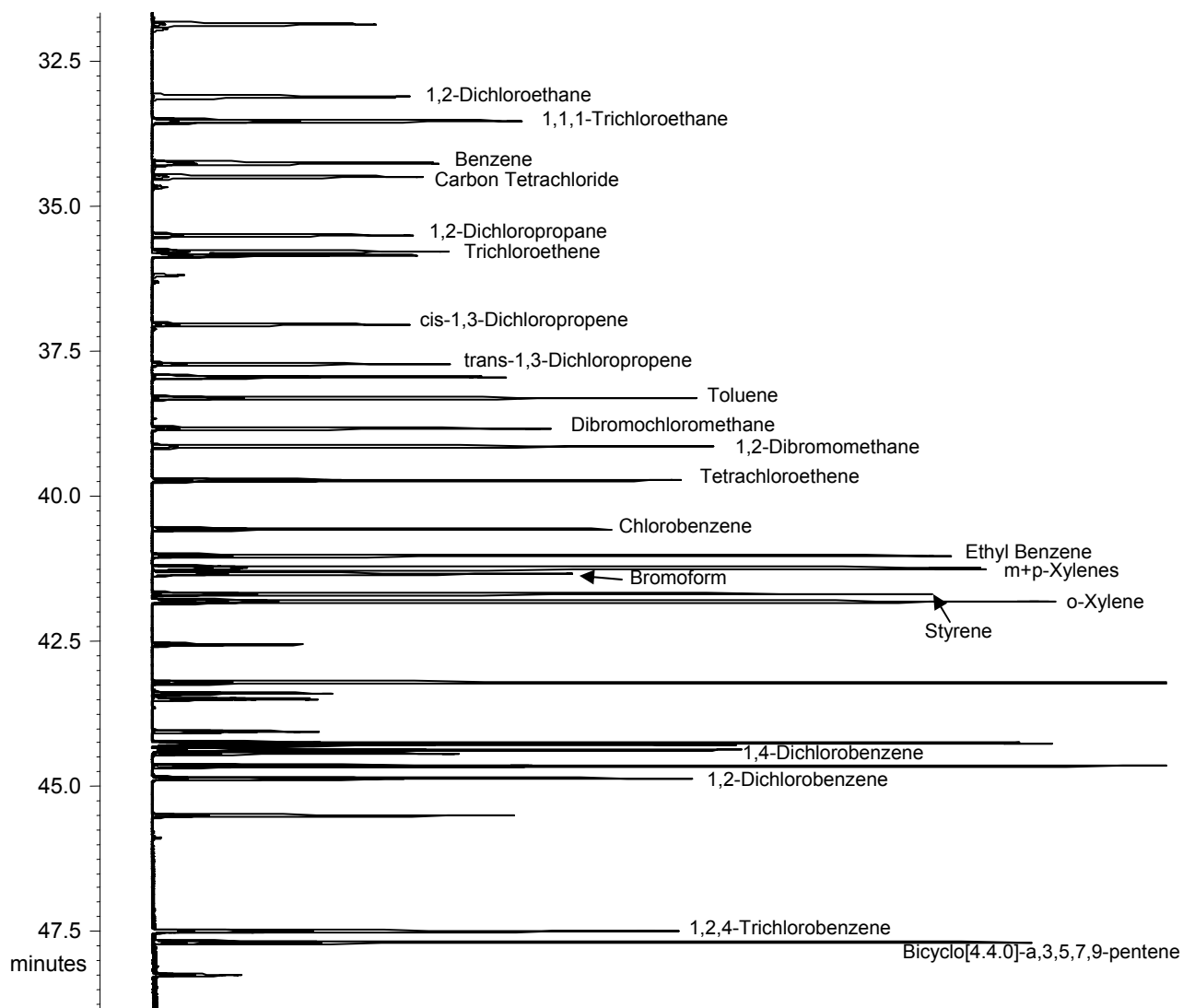
Sample Vol: 5 ml, Injection Split 1:100



Lotus Consulting
310/569-0128 Fax 714/898-7461
email ebramstoncook@msn.com



5781 Campo Walk
Long Beach, California 90803



Interconversion of IUPAC and Common Names

IUPAC Label	Common Name
Chloroethene	Vinyl Chloride
2-Methoxy-2-methylpropane	Methyl-tert-butyl ether
Propanone	Acetone
Dichloromethane	Methylene Chloride
Trichloroethene	Trichloroethylene
Tetrachloroethene	Tetrachloroethylene
Bicyclo[4.4.0]deca-a,3,5,7,9-pentene	Naphthalene

Notes:

1. On-column injection performed at 11.00 minutes. Prior interval involves trapping processes.
2. All compound labels are per IUPAC protocol.
3. Peaks are displayed using their Quan Ions only.
4. Using 91+106 Quan ions for xylenes aids in extending the dynamic range for these analytes.