

# **Reconnection of Bruker SCION 43x and 45x Gas Chromatographs with Bruker MS Workstation 8.0**

by:

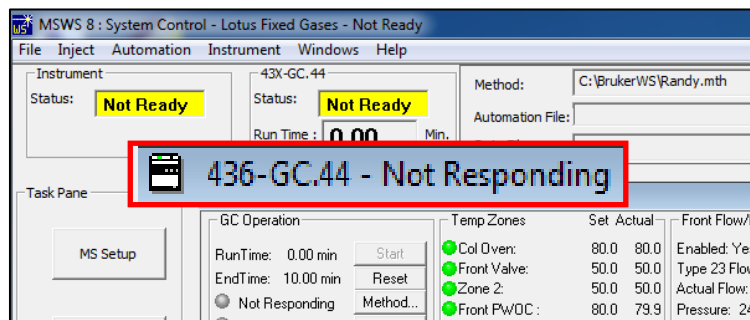
**Randall Bramston-Cook**  
Lotus Consulting  
5781 Campo Walk  
Long Beach, Ca 90803  
310/569-0128  
randy@lotusinstruments.com



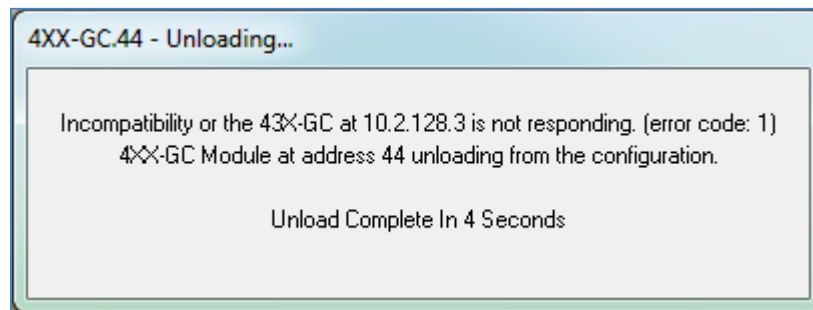
Powering off a Bruker SCION 43x/45x<sup>1</sup> Gas Chromatograph or closing System Control in MS Workstation causes communications between the GC and Workstation to be lost. Reestablishing the link may be automatic under certain conditions. Other circumstances may require executing a series of steps outlined below.

If the GC needs to be powered off, reconnection is automatic if System Control is first closed down before the GC is powered down. Then the GC is powered up and System Control reopened, in that order – and all is well.

If the GC is powered off with System Control still open, MS Workstation will indicate that GC is “Not Responding”,



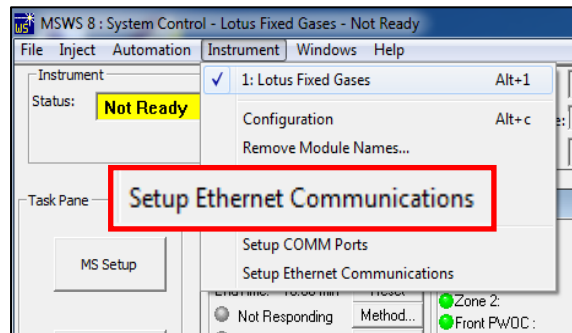
and automatically unloads the driver for GC control, and clears out settings in Setup Ethernet.



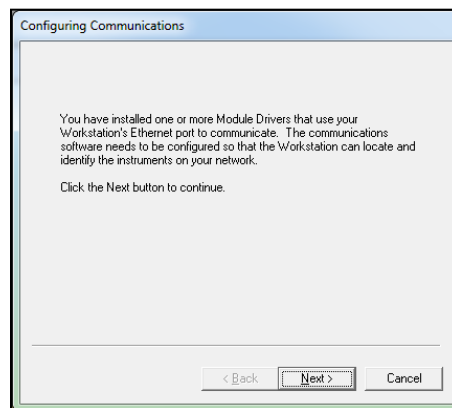
<sup>1</sup> These operations apply to the Bruker Models 430, 431, 436, 450, 451 and 456 operating with Bruker MSWS Version 8.0.

Steps to reestablish connection are:

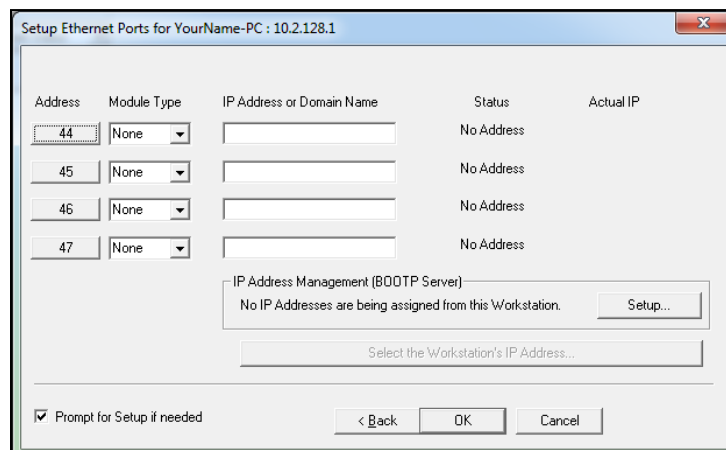
1. Power up the GC and wait until GC initialization is successfully completed. This normally takes about 100 seconds without an Automated Sampler and 150 seconds with.
2. Open up System Control in MSWS and locate Instrument > Setup Ethernet Communications.



3. Click on Setup Ethernet Communications to get this screen.



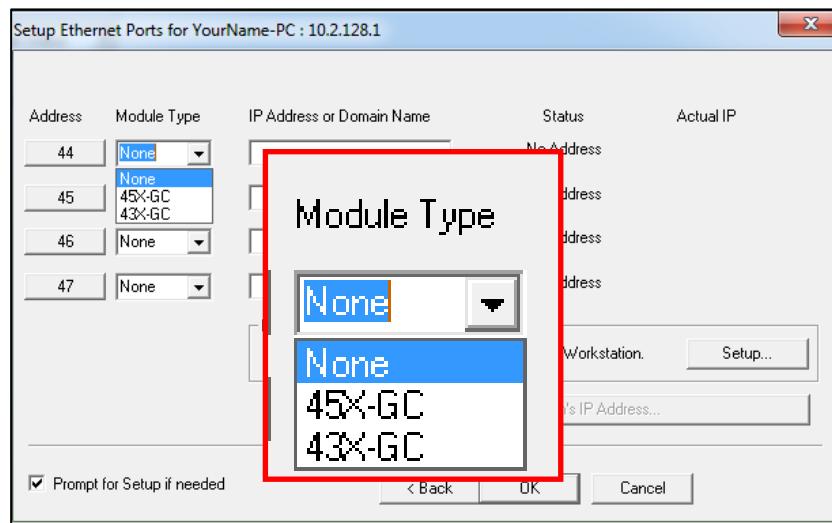
4. Click on "Next".



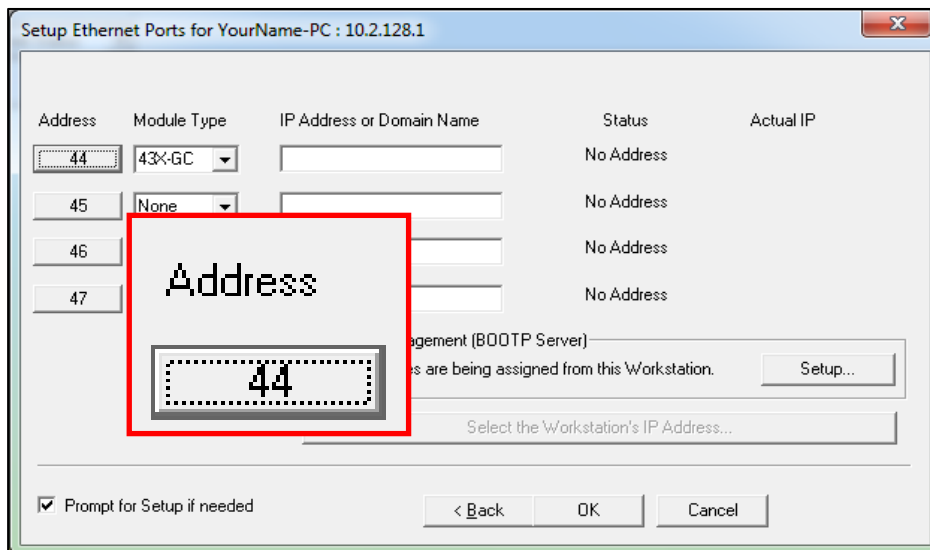
5. Verify that the PC IP Address in the header of this window is appropriate. Often, the system is set up as a local network with a computer IP address of 10.2.128.1. If a different address is displayed than expected, change by choosing IP Address Management Setup or contact your IT department.

**Setup Ethernet Ports for YourName-PC : 10.2.128.1**

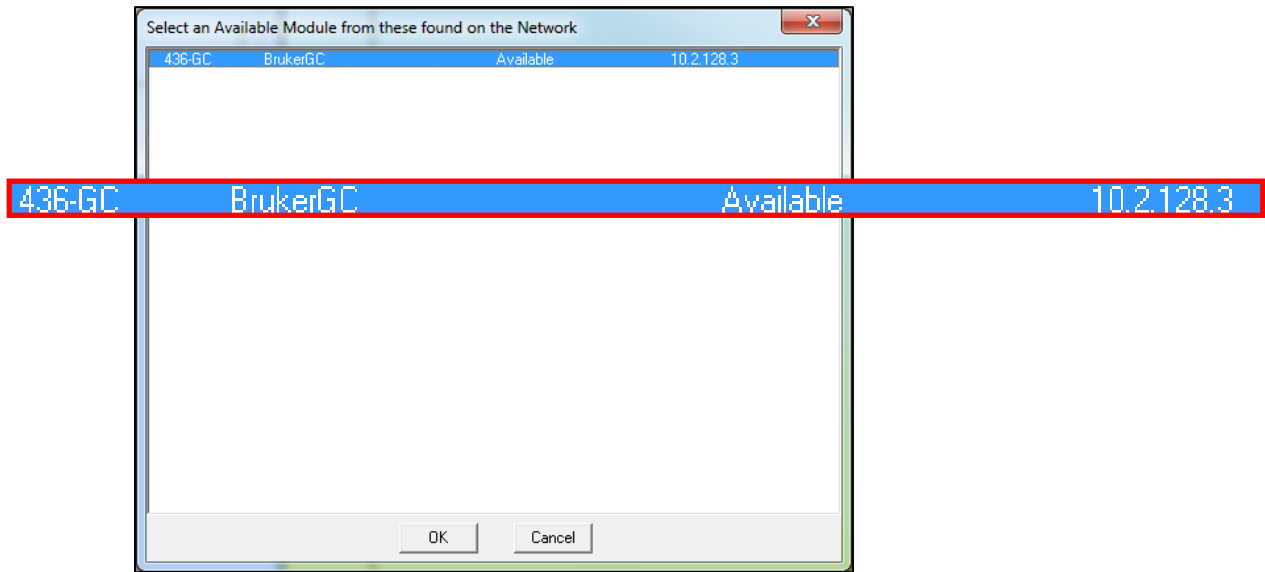
6. Set Module Type to either 43X-GC or 45X-GC, as appropriate for the connected GC.



7. Click on Address 44 box.

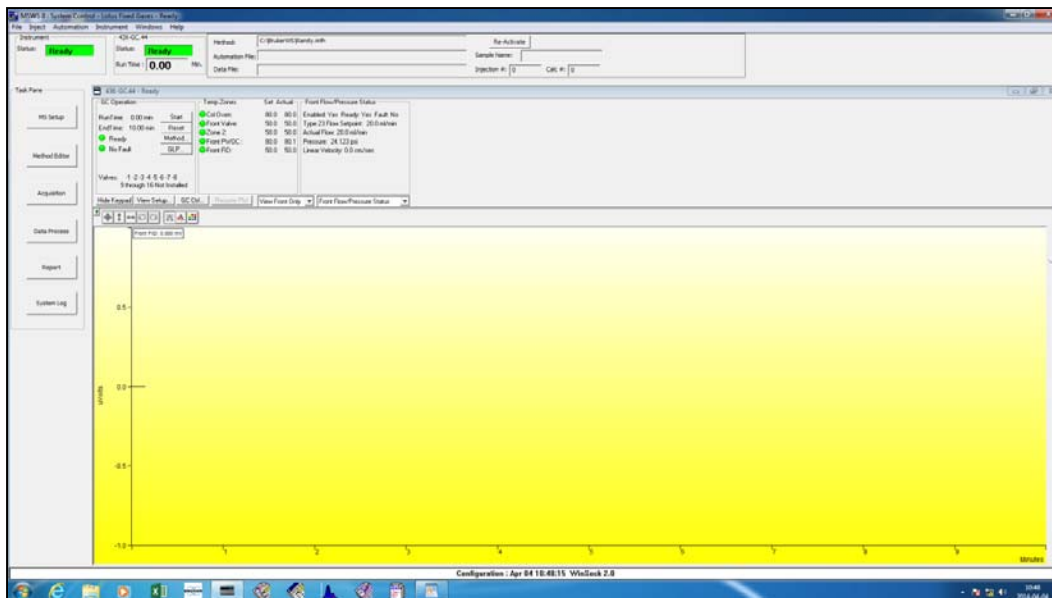


8. Locate the desired GC among available modules and click on it to highlight the line. Typically only one instrument is displayed, but others could be with only one available to be active.



9. The IP Address or Domain Name will automatically populate the display and Status will change to Available and then to On-Line. System Control may need to be closed and reopened to fully activate the module.

If everything is properly connected, then the active screen is displayed, and normal operations can continue.





---

---

**Lotus Consulting**

310/569-0128

email [randy@lotusinstruments.com](mailto:randy@lotusinstruments.com)



5781 Campo Walk  
Long Beach, California 90803  
[www.lotusinstruments.com](http://www.lotusinstruments.com)